

MARCH 2024

POPE COUNTY
Senior
ACTIVITY
CENTER

L B U G O R C G X U G C O I N S J T
V E M A S C U O D T O L U C K Y E M
X E P B C P I L Y N O P C R L P R F
X O A R U H R D E S D L E I W J A L
A S G R E N I I L F F E L P H X I O
E C Q E T C N C N K R N E Z N C N W
L A V R G H H Y K G I T B Q I R B E
U R S N R G D A Z Y D L R H R O O R
B S C T L U S A U S A B A U I S W S
X V U P E I J G Y N Y Q T N S S Y J
K S H A M R O C K S U B E T H O C I
N Y B A S K E T M Q I X P P Z B P R

BASKET	EASTER	LENT
BUNNY	EGGS	LEPRECHAUN
CELEBRATE	FLOWERS	LUCKY
CHICK	GOLD	OSCAR
COINS	GOOD FRIDAY	RAINBOW
CROSS	HUNT	SHAMROCK
EARTH DAY	IRISH	SPRING

The Great American Eclipse of 2024 is fast approaching, and Arkansas Tech University's Homeland Security and Emergency Management Program, along with Main Street Russellville, are taking proactive steps to educate the community about this rare celestial event. On Monday, April 8th, a total solar eclipse will pass over the United States, including Russellville, Arkansas.

To help citizens prepare for this extraordinary event, the Ready Russellville Eclipse Preparedness Event has been scheduled for Saturday, March 9th from 11 a.m. to 1 p.m. at Depot Park in downtown Russellville. This family-friendly event is free and open to the public and will feature information sessions, training workshops, and demonstrations aimed at equipping attendees with the knowledge they need to safely experience the eclipse. *Tech Desk



Every thing will be Solar Eclipse themed for the day. Blocking Bingo, Celestial Lunch and Shoot the Moon Cornhole will be some of the fun to be had!

TRIPS

3/7 - Flea Market Trip to Alma. We will leave at 9:00.

**3/20 - Murry's Dinner Playhouse - Leave at 9:30
Ticket \$42 / Suggested Transportation Donation \$8**

3/14 - Choctaw Casino in Pocola. We will leave at 8:00.



Murry's Dinner Playhouse



Neighbors Max and John have been feuding for most of their lives. Invigorated by their shared affection for their new neighbor, they face off as romantic rivals until their hilarious shenanigans finally bring about a resolution to their longstanding differences. Based on the 1993 film, this stage adaptation captures the lovably crotchety characters through twinkling humor and great songs.

**Dementia Caregiver
Support Group
March 12 at 1:00**



COME HAVE FUN WITH US!

Quilting * Bean Bag Baseball * Bingo * Yoga * Watercolor Painting * Line Dancing * Corn Hole * Sewing * Drums Alive * Cards * Exercise * Spirit Enrichment * Volleyball * And More



Are you a card shark who loves a good game of canasta, bridge, or any other thrilling card game? Swing by and discover the perfect group for you!



DON'T MISS OUT ON THE TRIP TO MAK DADDY'S, MARCH 22. WE WILL LEAVE AT 6:00 PM. GET READY FOR A NIGHT OF GREAT LIVE MUSIC AND FUN. MARK YOUR CALENDARS NOW.



Roll the dice and join our casino adventure! The van leaves at 8:00 sharp! May the odds be ever in your favor.



Join us for
Drums Alive
this month!

FRIDAY

March 2024
3-1 @ 2:30PM
3-8 @ 2:30PM
3-15 @ 2:30PM
3-22 @ 2:30PM
3-29 @ 2:30PM

Lunch is served Monday -

Friday 11:30-12:30

Seniors 60 & over:

\$5 donation

To-Go Meals \$8

Under 60 \$8

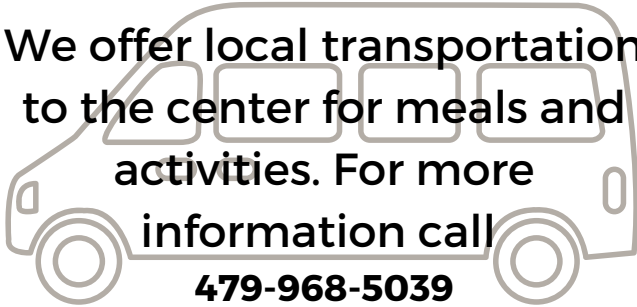


Meals on Wheels

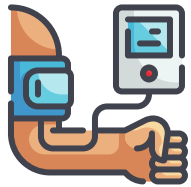
If you know someone who is 60 or older and homebound, please call the center at 479-968-5039 to make a referral.

We offer local transportation to the center for meals and activities. For more information call

479-968-5039



SPECIAL THANKS TO KEN WORTHEN SPIRITUAL ENRICHMENT GROUP FOR SPONSORING THE MARCH NEWSLETTER.



Don't forget to utilize the blood pressure machine located in the library. Area Agency on Aging has generously provided it for all to use.

Activity Center Advisory Council Members

Joe Jirinec—President

Norma Humphrey—Vice President

Vicki High * Robert Beckham

Susan Kahon * Sherry Tidwell

Susie Condit * Martha Hern * Robin Antrim

Pope County Senior Activity Center

1010 Rochester Ave. Russellville, AR 72801

Hours: Monday thru Friday: 7:30 a.m.—3:30 p.m.

Home Delivery

Coordinator

Audria Curtis

curtisa@fccare.org

Senior Services Operational

Administrator

Kayla Weber

weberk@fccare.org

Site Coordinator

Patti Qualls

quallsp@fccare.org

Senior Services

Information & Training

Specialist

Chelane Smith

smithc@fccare.org

Senior Services Social &

Marketing Administrator

Dawn Haney

haneyd@fccare.org

(479)-968-5039

Fax (479) 890-4771

Head Cook

Mary Wilson

wilsonm@fccare.org

All Sites Support

Lane McKinley

mckinleyl@fccare.org



WWW.RIVERVALLEYSENIORS.COM Find us on 